



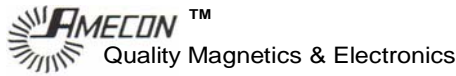
RTI Electronics, Inc.™

1800 E. Via Burton Street
Anaheim, CA 92806-1213

A Wholly Owned Subsidiary of IntriCon Corporation

Phone : 714-765-8200

Fax: 714-765-8201



IMB Electronic Products™

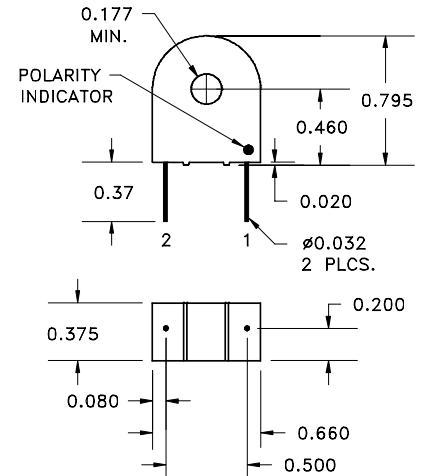


10A CURRENT TRANSFORMER, P/N 5300-0010

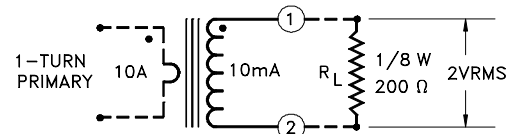
ELECTRICAL SPECIFICATIONS	
PRIMARY CURRENT:	10A NOM., 40A MAX.
TURNS RATIO:	1000:1 NOMINAL
VOLT PER AMP RATIO AT 5A, ACROSS 400 OHM LOAD:	0.200 V/A ± 1%
VOLT PER AMP RATIO AT 0.5A, ACROSS 400 OHM LOAD:	0.191 V/A ± 1%
DC RESISTANCE AT 20°C:	83 ± 10% OHM.
DIELECTRIC WITHSTANDING VOLTAGE (HI-POT):	4kV RMS

MECHANICAL SPECIFICATIONS	
CUP:	DAP, PPS OR RYNITE
ENCAPSULANT:	EPOXY OR POLYURETHANE, LOW SHRINKAGE, HIGH RELIABILITY
FLAMMIBILITY:	CONFORMS TO 94-V0
TERMINALS:	PC PINS, 0.031" RD. OR 0.025" SQ.
MARKING:	AMECON P/N, DATE CODE, DOT AT START PIN.
APPROX. WT.:	0.018 LB.
TOLERANCE:	.X: ± 0.100 .XX: ± 0.030 .XXX: ± 0.010

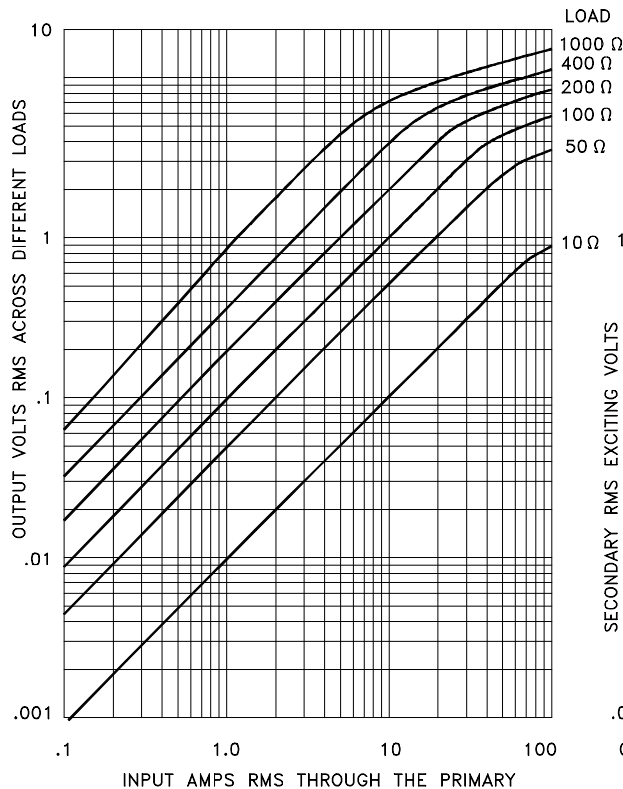
ENVIRONMENTAL SPECIFICATION:	
STORAGE TEMPERATURE:	-55°C < Ts < +130°C
OPERATING TEMPERATURE:	-55°C < Ts < +120°C
INSULATION RESISTANCE:	100 MEGOHM MIN.



NOTE:
UNLESS REQUESTED, THE TERMINATING RESISTOR
AND THE ONE-TURN PRIMARY ARE NOT SUPPLIED.



OUTPUT VOLTS VS. INPUT AMPS FOR VARIOUS OHMIC LOADS.



TYPICAL EXCITATION CURVE

